

**Round I - Screening Test**

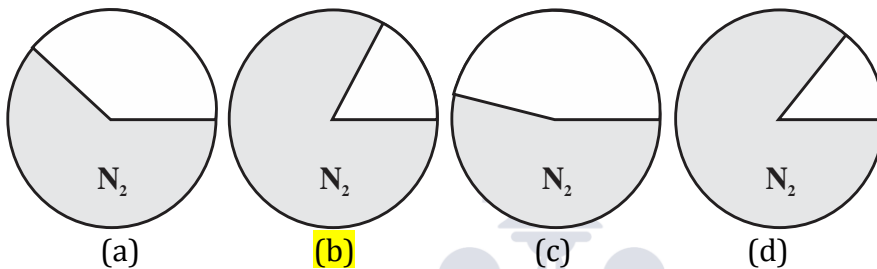
**Max Marks : 40**

**Duration : 30 Min**

**General Instructions :**

- i) All questions are compulsory
- ii) Each question carries 2 Marks
- iii) There is no negative marking
- iv) Please read and follow the instructions on OMR sheets while solving this test

**1) Identify a correct picture that shows the proportion of Nitrogen in air.**



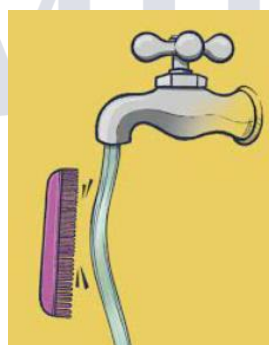
**2) Which climate is responsible for spoilage of food grains ?**

- (a) Hot and dry
- (b) Cold and dry
- (c) Hot and Humid
- (d) Cold and humid

**3) Observe the activity in picture A and B. Water coming out of the tap seems moving towards the comb. Select the proper reason of this, from the options appearing on the next page.**



**(A)**



**(B)**

**Space for Rough Work**

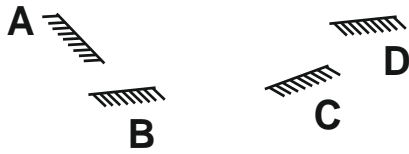
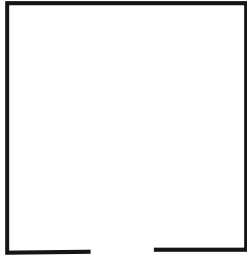
(a) Charged comb attract the water.

(b) Gravitational force between comb and water

(c) Magnetic force between comb and water

(d) None of these

- 4) In the given figure, there is a dark room. It has only one door. Outside the room a bulb is hanged at the point 'P'. Where should be a mirror placed to get the light in the dark room from that bulb ?



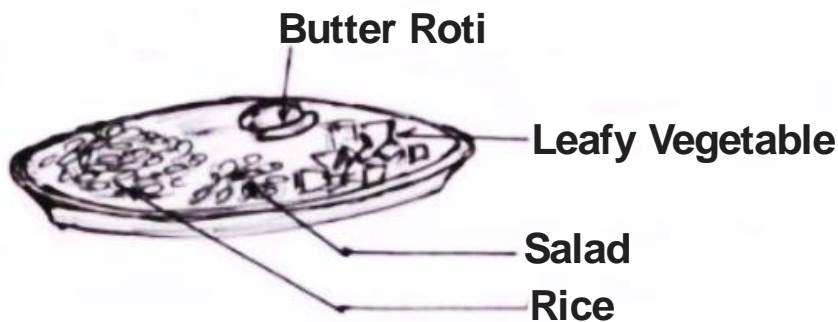
(a) A

(b) B

(c) C

(d) D

- 5) Which important component of the balanced diet is missing in the given picture ?



(a) Pickle

(b) Gulab Jamun

(c) Paneer

(d) Ghee

- 6) Aakash is in Kolkata and Vasundhara is in Mumbai. Aakash called Vasundhara and said, "Red round Sun is looking beautiful, Vasundhara said to Aakash, "\_\_\_\_\_".

(a) Ya ! I too see the red round sun at the Horizon

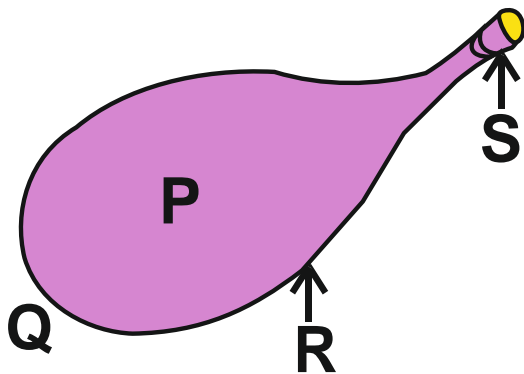
(b) No ! only red colour is seen at the Horizon

(c) No ! here it is still dark

(d) Sun has come far up from the Horizon

Space for Rough Work

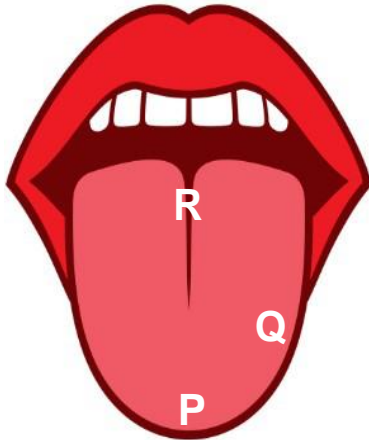
- 7) Observe the below figure. After blowing the balloon, at what part air particles density is maximum ?



- (a) at P                      (b) at Q                      (c) at R                      (d) at S
- 8) Two brands of chocolates, brand A and brand B are available in packs of 24 and 15, respectively. If Rima needs to buy an equal number of chocolates of both kinds, what is the least number of packs of each kind she needs to buy respectively?
- (a) 2 of first kind, 8 of second kind  
(b) 5 of first kind, 8 of second kind  
(c) 5 of first kind, 7 of second kind  
(d) 2 of first kind, 7 of second kind
- 9) Teenager Riya has been advised by her Doctor to strictly avoid food containing more oil and ghee. Which of the following is the most likely cause of this ?
- (a) Diabetes                      (b) Malaria                      (c) Jaundice                      (d) T.B.
- 10) The shadow of the aeroplane flying in the sky is not seen on the ground because \_\_\_\_\_
- (a) Ground is too big  
(b) There is light between aeroplane and ground  
(c) Distance of ground from aeroplane is huge.  
(d) Both (b) & (c)

Space for Rough Work

11) Identify the correct pair of food items and taste zones of our tongue.



- (a) P – ice-cream, Q – tamarind, R – coffee beans
- (b) P – coffee beans, Q – tamarind, R – ice-cream
- (c) P – tamarind, Q – ice-cream, R – coffee beans
- (d) P – tamarind, Q – coffee beans, R – ice-cream

12) What is the advantage of having two ears over having one ear?

- (a) Can hear sound more clearly.
- (b) If one ear is not functioning, you can use the other.
- (c) Can find the direction of the sound.
- (d) Human face looks symmetrical.

13) Identify the common phenomenon required for painting, dusting with cloth, writing and scrubbing ?

- (a) Gravity
- (b) Friction
- (c) Pressure
- (d) Magnetism

14) When we apply soap while washing clothes and rinse in water, which of the following actions take place respectively.

- (a) Chemical action, Physical action.
- (b) Physical action, Chemical action.
- (c) Physical action, Physical action.
- (d) Chemical action, Chemical action.

Space for Rough Work

15) When we visit a mall, we enter through a frame which is used for \_\_\_\_\_



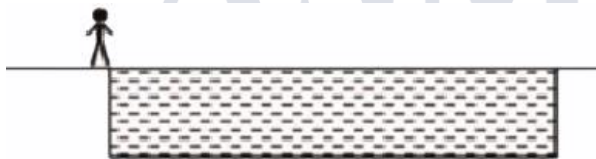
- (a) To click photographs for safety purpose.
- (b) To search for food items carried by people.
- (c) To prevent theft of merchandise
- (d) To check metallic object carried by people.

16) Ramesh moves a magnet in the sand containing Iron pins. In this action, what should be the observation of the pins which stuck to the magnet.



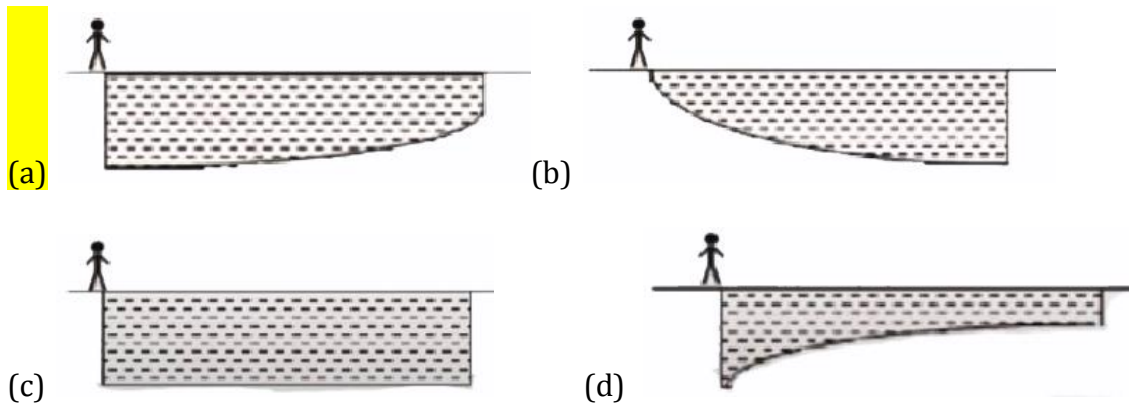
- (a) Increases from A to S and decreases till N.
- (b) Goes on decreasing from A towards both ends.
- (c) Increases from S to N.
- (d) Will increase from A till the both ends.

17) An observer stands at the edge of a swimming pool, as sketched in the figure below :



The pool will appear to the observer as

Space for Rough Work



- 18) **Why do ice cream vendors add salt to the ice next to the ice cream?**  
 (a) To freeze milk to ice cream  
 (b) To delay melting of ice cream  
 (c) To kill the germs.  
 (d) To improve the texture of the ice cream
- 19) **Rakesh, somewhere on the earth travels 10 km South, then 10 km East, then 10 km North. He is back at his starting point. Which place on the earth is he likely to be ?**  
 (a) Anywhere on the earth  
 (b) South Pole  
 (c) Equator  
 (d) North pole
- 20) **The Eiffel Tower has a mass of 10,000,000 kg. A 100:1 scaled model of the tower made from the same material will have a mass of**  
 (a) 100,000 kg      (b) 10,000 kg      (c) 1,000 kg      (d) 10 kg

\*\*\*\*\*

### Feedback Section

- 21) **Please Select the most appropriate option according to you and provide us your valuable feedback about the test paper.**  
 (a) Interesting but Difficult      (b) Interesting and Easy  
 (c) Easy but Boring      (d) Difficult and Boring

Space for Rough Work